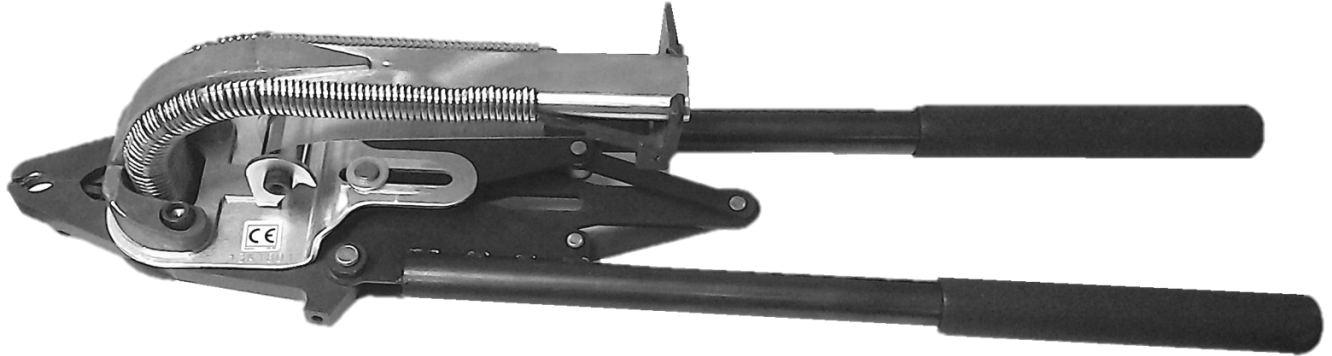


## C-RING TOOL

## KC1511HT



### KC1511HT WARNINGS !

- ⇒ Always read tool manual before operating tool.
- ⇒ Always wear safety glasses when operating or while in the area where a tool is being used.
- ⇒ When test cycling tool always point tool away from work piece and away from personnel.
- ⇒ Operate tool in an unobstructed area.



The employer or user must insure the use of eye protection during tool use. All eye protection shall conform to ANSI Z87.1-2003 and provide frontal and side protection; all personnel located in the work area are required to use eye protection during loading, service or operation of the tool. Eye protection is needed to guard against possible flying particles and debris that could cause severe eye injury.

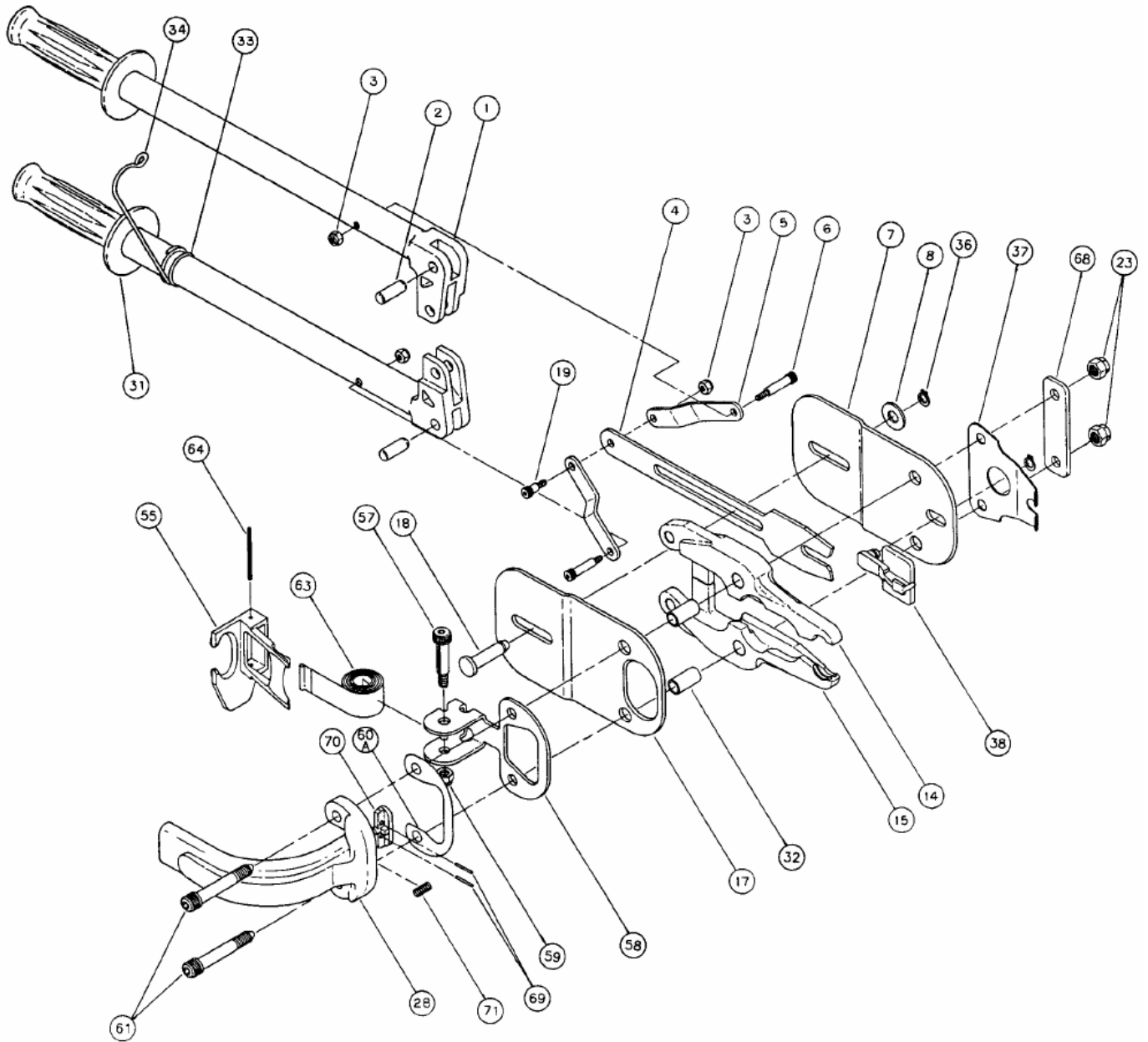
### WARNING! TOOL OPERATION

- ⇒ Always handle tool with care.
- ⇒ Never engage in horseplay.
- ⇒ Never engage tool unless tool is pointed toward the work piece.
- ⇒ Keep the hands and bodies of the operator and all other personnel away from the tool jaws at all times.

### WARNING! LOADING TOOL

- ⇒ Never place hands or other body parts in the tool jaws while loading tool. Never point tool toward anyone.

# KC1511HT DIAGRAM



## KC1511HT PARTS LIST

Label	Quantity	No.	Description
1	2	SC50HP001	Handle Assembly KC1511HT
2	2	SC50HP002	Dowel Pin 3/8" x 1" KC1511HT
3	3	SC50HP003	Thin Nylok Nut KC1511HT
4	1	SC50HP004	Feeder Blade KC1511HT
5	2	SC50HP005	Connecting Link KC1511HT
6	2	SC50HP006	Shoulder Bolt .25 x 1.00 KC1511HT
7	1	SC50HP007	Left Side Plate KC1511HT
8	1	HC1511034	Washer 5/16 KC1511HT
14	1	SC50HP014	Upper Jaw KC1511HT
15	1	SC50HP015	Lower Jaw KC1511HT
17	1	SC50HP017	Right Side Plate KC1511HT
18	1	SC50HP018	Clevis Pin KC1511HT
19	1	SC50HP019	Shoulder Bolt .25 x .375 KC1511HT
23	2	HC1511020	Flex Nut KC1511HT
28	1	SC50HP028	Magazine KC1511HT
32	2	HC1511032	Jaw Bushing KC1511HT
33	1	SC50HP033	O-RING, 15/16 X 1/8 KC1511HT
34	1	SC50HP034	Handle Spring Latch KC1511HT
37	1	HC1511037	Latch Spring KC1511HT
38	1	HC1511038	Latch KC1511HT
55	1	HC1511055	Pusher KC1511HT
57	1	HC1511057	Spring Bolt KC1511HT
58	1	SC50HP058	Spring Spool Bracket KC1511HT
59	1	HC1511059	Flexloc Nut KC1511HT
60A	1	HC1511060A	Shim .030 KC1511HT
61	2	HC1511061	Jaw Bolt KC1511HT
64	1	HC1511064	Roll Pin KC1511HT
68	1	SC50HP068	Support Plate KC1511HT
69	2	HC1511069	Roll Pin KC1511HT
31	2	HC1511HT017	Hand Grips (SC50HP031-KC1511HT)
36	2	HC1511036	Latch clip (SC50HP036-KC1511HT)
63	1	HC1511063	Pusher spring (SC50HP063-KC1511HT)
70	1	HC1511070	Shoe - magazine (SC50HP070-KC1511HT)
71	1	HC1511071	Spring - magazine (SC50HP071-KC1511HT)

# TROUBLESHOOTING

## Ring Does Not Form Correctly:

- ✓ Check for foreign debris in the jaw area, especially in the area between the side plates and rollers.
- ✓ The jaws may be worn from extended use. Check the land between the receiving grooves on the jaws. If the land area is worn excessively then replacing the jaws is recommended.
- ✓ When the tool is used in corrosive applications, light oil should be applied on a regular basis to the jaws, bushings, and rollers.
- ✓ When the ring “teardrops” the latch is not backing the ring up properly. Replace the latch or latch spring to provide correct ring shape.

## Feeding Problems:

- ✓ If the rings do not feed smoothly down the magazine, check the pusher spring for proper tension. If the magazine is covered with dirt and debris, clean the magazine.
- ✓ When rings feed properly across the magazine, but do not feed into the jaws without spitting out of the magazine side of the tool, remove all rings from the magazine. Pull back and place pusher on hook. Now cycle the tool to remove ring from jaws. Close handles so the feeder blade is about 2 inches (50.8mm) back from the latch. This will allow you to check for jaw clearance between the side plates.
- ✓ If the pusher fingers show signs of spreading, this will cause the last few rings to not feed properly into the jaws. You may try to bend the fingers of the pusher back to original shape or replace with a new pusher at this time.

## General Care:

Because the tool is primarily designed to be used on projects in the outside environment, keeping the tool clean is essential for extending the tool life. Care should be taken to prevent the jaws and magazine from contacting dirt and sand. The abrasive effect of sand will greatly reduce the jaw life. Dropping the tool is the most common cause for repair. Replace worn or damaged parts to keep tool in top operating condition. Always use **genuine**, King Steel hog rings in the KC1511HT. Our hog rings are manufactured to a precise tolerance to ensure smooth operation. Due to the inferior design of our competitors rings, jamming may occur. The KC1511HT is designed to be trouble free with minimal lubrication, however if you choose, a dry graphite lubricant may be utilized.

# CUSTOMER SERVICE

**Congratulations!** You have just purchased the finest hog ring tool available worldwide. Your tool was proudly engineered and built without compromise, in the **U.S.A.!**

Factory service on your tool can normally be completed within 48 hours. A recommended spare parts list is available from King Steel Fasteners, Inc. Your tool has been calibrated by the factory. If you are experiencing any problems, contact the King Steel Customer Service Department.

### LIMITED WARRANTY

*The manufacturer warrants this tool to be free of manufacturing defects. The warranty period is 90 calendar days from date of purchase. The warranty is issued to the original purchaser exclusively. The tool or part will be repaired or replaced at the manufacturers discretion. The warranty does not cover failure due to neglect, damage or normal wear. The manufacturer shall not be liable for any incidental or consequential damage due to tool failure.*

**KING STEEL**  
FASTENERS

Made in the USA

1800 Metamora Road  
Oxford, MI 48371 • USA  
Phone: 1-800-721-0300  
Fax: 1-800-721-0400